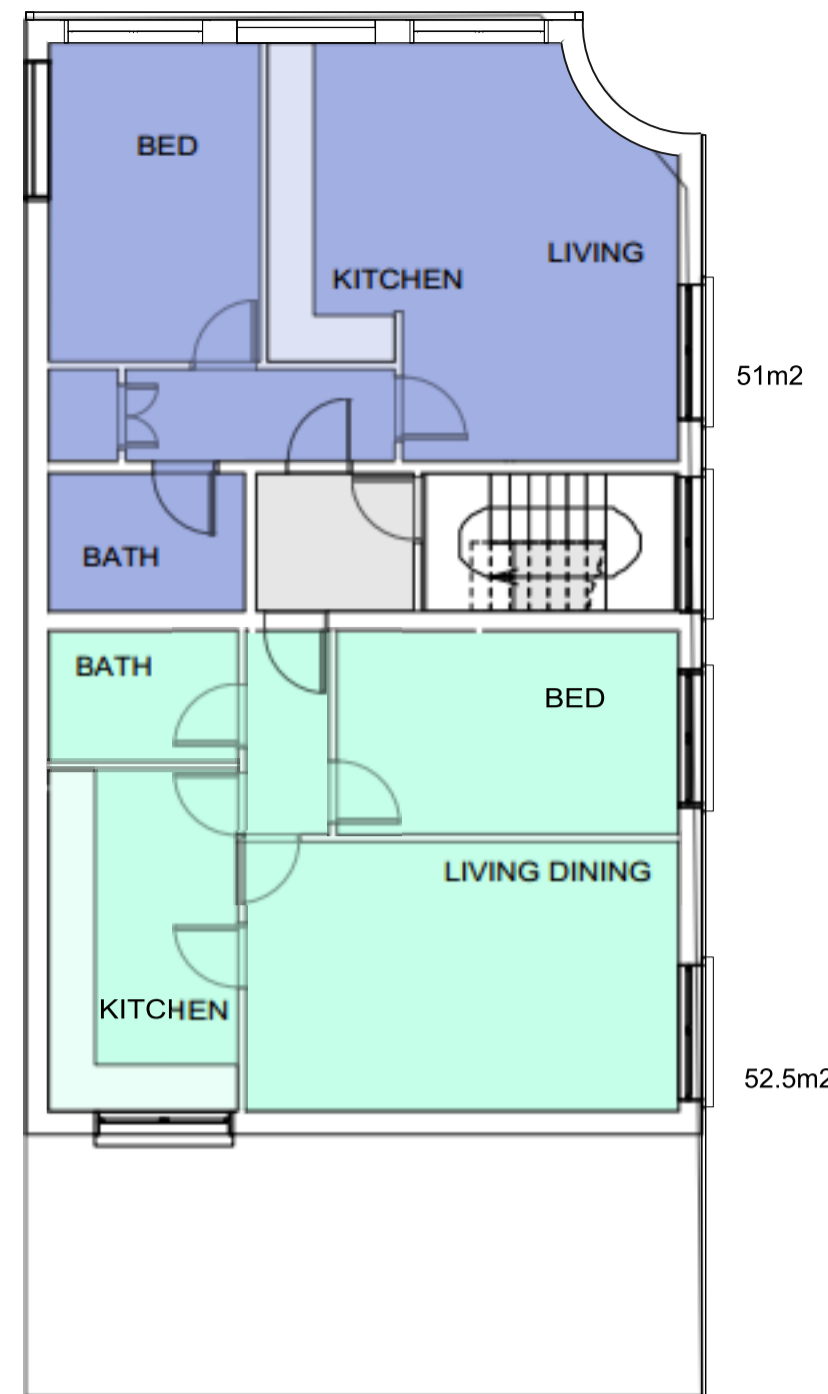
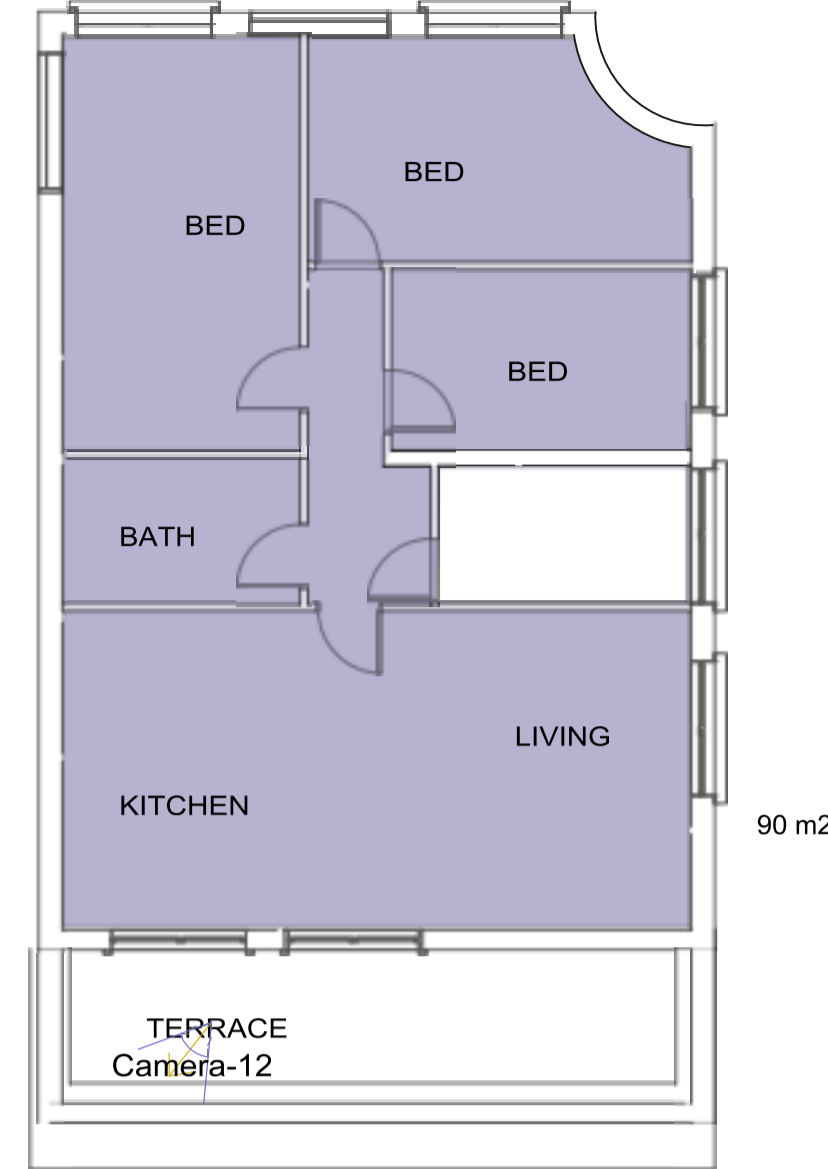


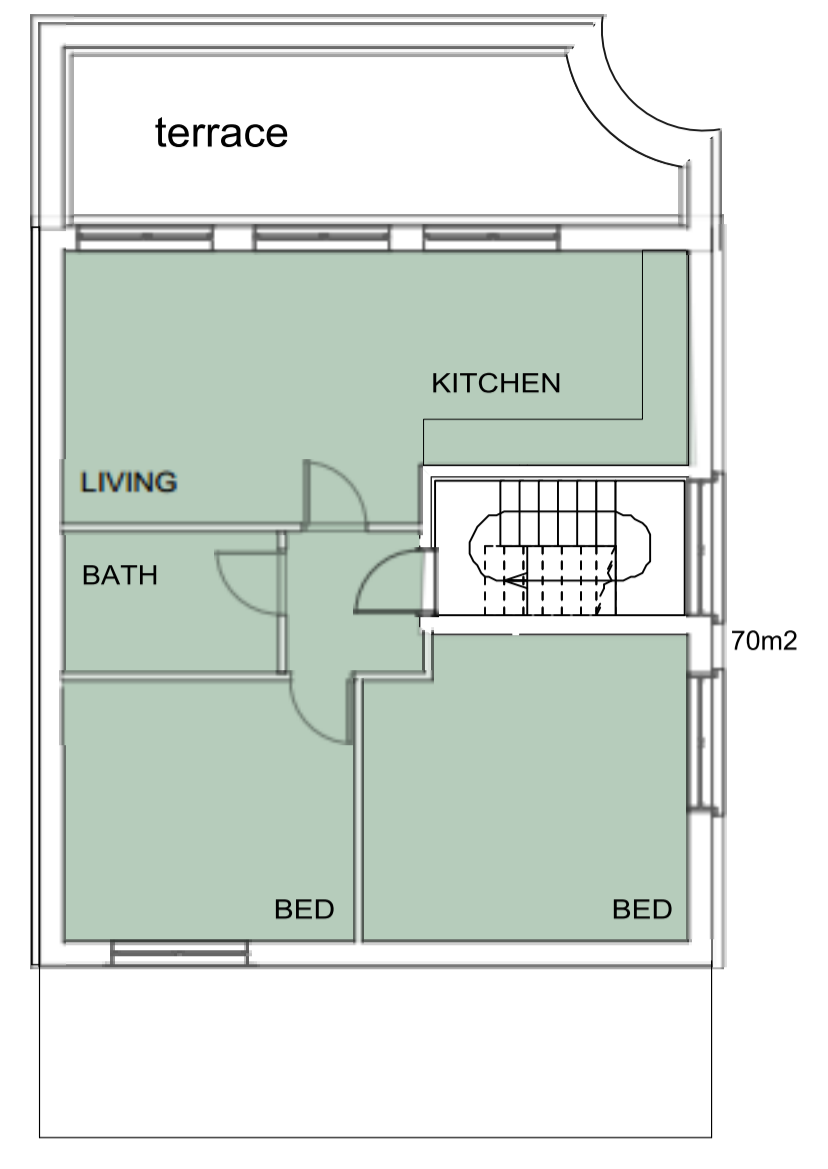
GROUND FLOOR



FIRST FLOOR



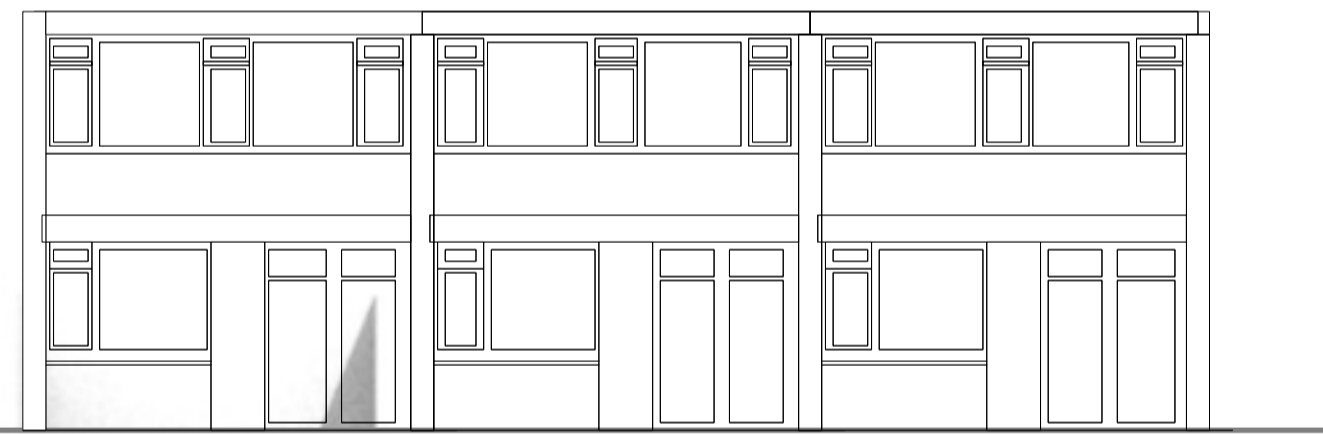
SECOND FLOOR



THIRD FLOOR



WEST ELEVATION

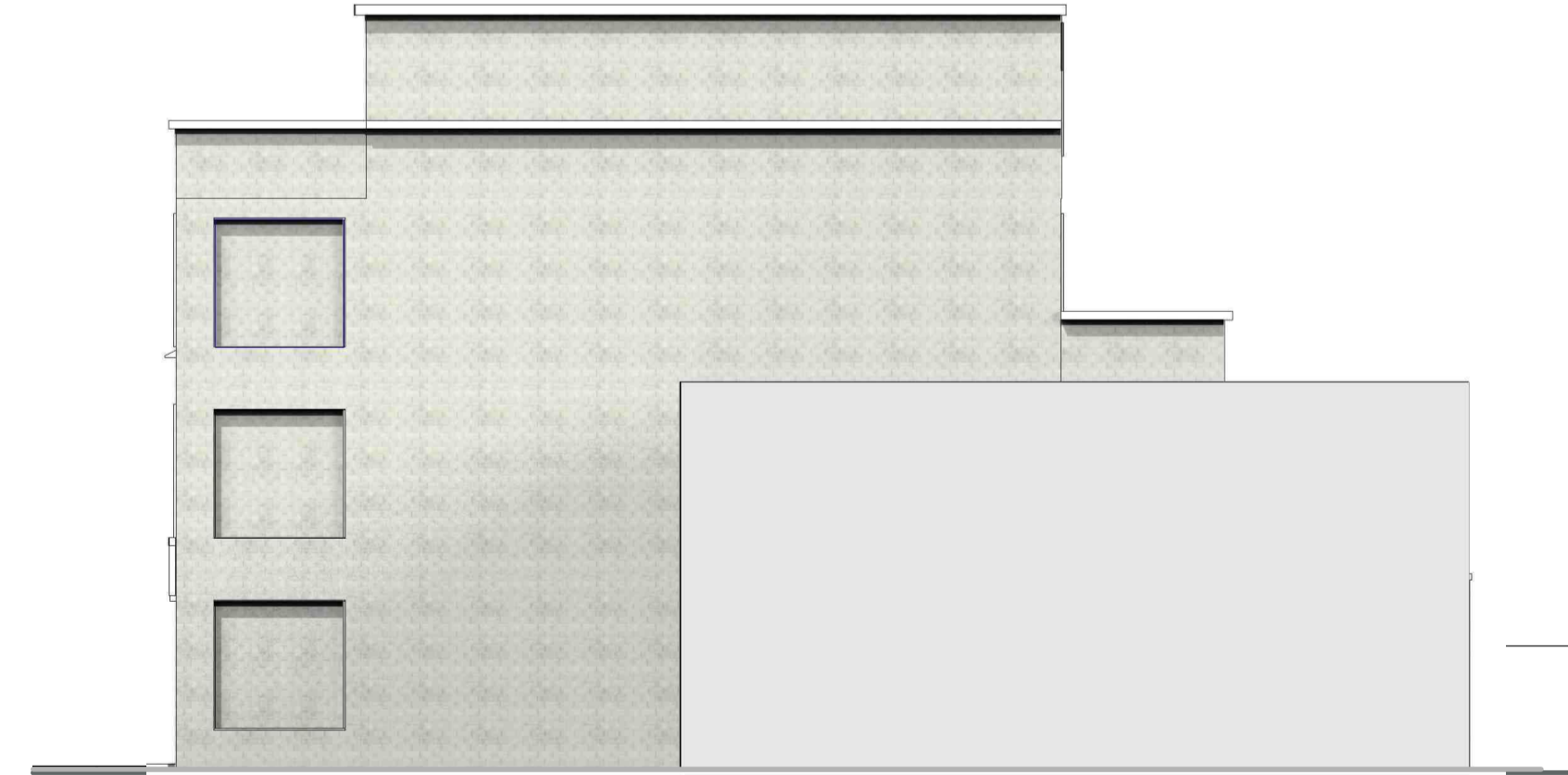


NORTH ELEVATION

bricks to rear and side elevations Traditional Brick and Stone Normandy Grey  
windows powder coated aluminium, rendered reveals



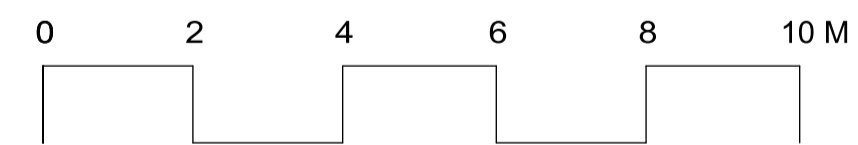
EAST ELEVATION



SOUTH ELEVATION

SCHEDULE

- 1x 3 bed flat with terrace 90 sq m
- 1x 2 bed flat with terrace 70 sq m
- 2X 1B 2p flats 51/52 M2
- A4 Drinking 100 M2



A	22/6/12	Bar increased. 1 bed flat substituted							Design Firm <b>Barker Shorten Architects</b> 23-28 Penn Street London N1 5DL 0207729 1077 studio@barkershorten.com	Project Title <b>New Flats and Commercial Unit</b> 25 Carmen Street London E14 6AX	Project Manager	Project ID
	No.	Date	Revision Notes	Zone	Approvals	No.	Date				Issue Notes	Drawn By
									Consultant	Drawing Title	Date	Project ID 319 Scale 1:100 @ A1 Drawing No. <b>02 rev B</b> of